

TMS Maritime is a leading UK specialist in marine civil engineering, ancillary floating plant and diving services

Client: Fort Picklecombe Management Co
Project: Fort Picklecombe Breakwater Repair

Consulting Engineers: BSW
Project Duration: 2.5 weeks
Project Value: £41,000

Requirement:

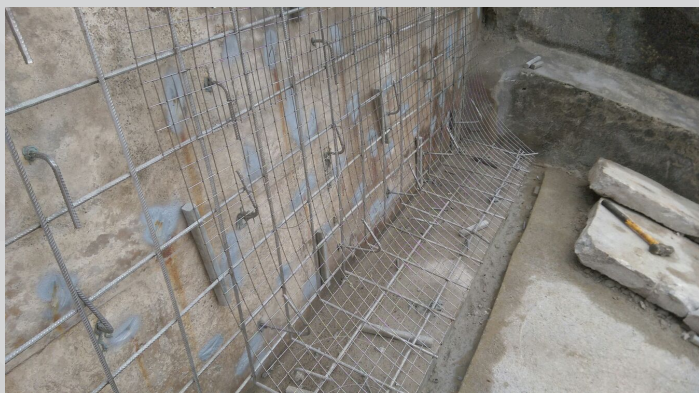
Fort Picklecombe, situated at the entrance to Plymouth Sound, was originally built in the 1860s as a fortification to protect the Plymouth Naval Base from enemy invasion. The breakwater situated in front of this historic Fort, (which was converted during the 1970s into residences) was damaged during the 2014 storms and had deteriorated further, necessitating urgent repair.

The breakwater plays an essential part in providing protection for both the foundations of the historic Fort and its car park from damage by the sea.

Solution:



TMS were awarded the contract to repair the breakwater situated to the seaward side of the Fort. The existing wall was prepared and coated with a waterproof primer. The wall was then reinforced; dowels, stainless steel mesh and weld mesh were installed to the curved profile of the breakwater. Dry concrete was then sprayed directly onto the curved profile in order to achieve a smooth finish in order to reduce the effects of wave action by deflection, thereby providing long lasting protection for the Fort against the actions of the sea.



T: +44(0)1626-866066 E: info@tmsmaritime.co.uk www.tmsmaritime.co.uk